

OR-6090 UV PRO

High Performance UV Flatbed Printer



- - 2-4 industrial print heads optional;
- - Printing size : 600mm(X) x 900mm(Y);
- - Media thickness 1mm-150mm;
- - Maximum curving height : 15mm;
- - Printable non-flat material,variable application scheme;
- - Printable cylindrical material (Optional components).

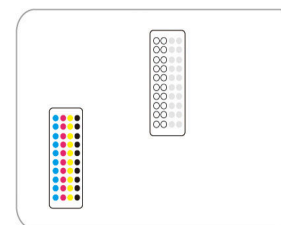


Simultaneously Multi-layer print

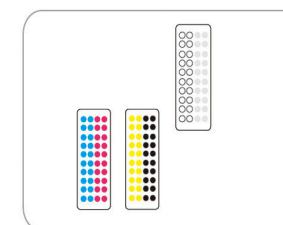
ORIC UV Ink



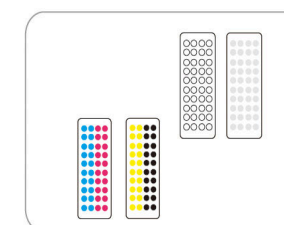
2 print heads arrangement

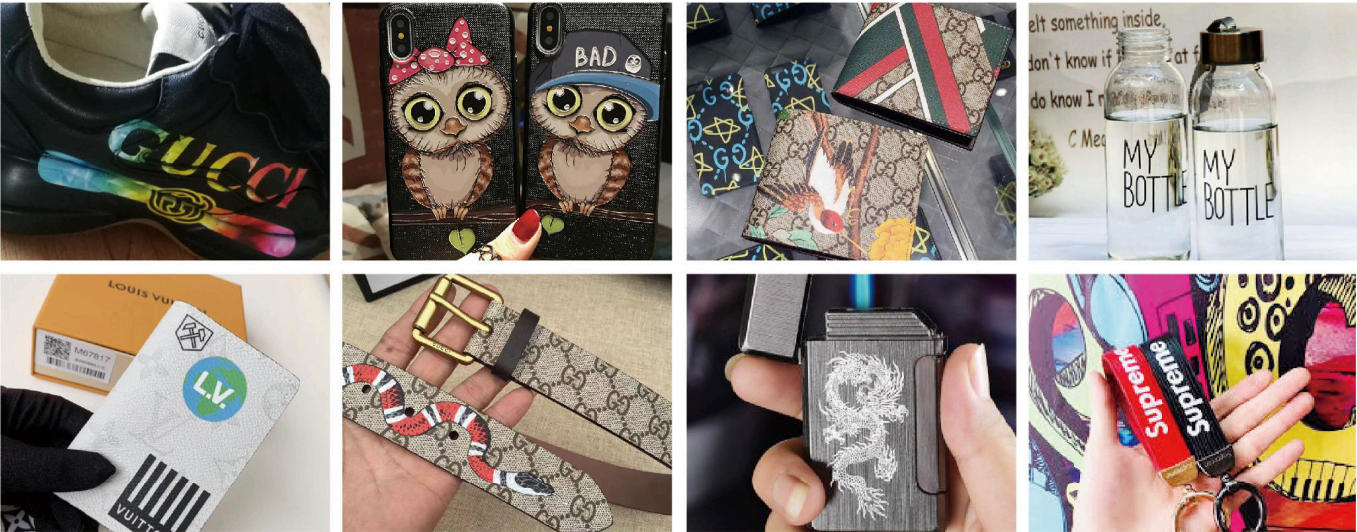


3 print heads arrangement



4 print heads arrangement





Widely used in industrial and packaging applications, identification signs, display props, personality photo, frame production, crystal imaging products, crafted gift, souvenirs, personalized products like lighter, coaster, power bank, U disk, keychain, ashtray, brooch, eather case, strap, wallet, purse, insole, fashion shoes

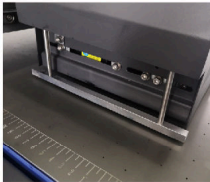
● **Technical Specifications**

Model	OR-6090 UV Pro	
Print Head	2-4 Industrial Print Heads	
Printing Technology	Gray scale piezoelectric inkjet technology	
Media Thickness	1mm-150mm	
Curving Height	Maximum 15mm	
Printing Size	600mm(X) x 900mm(Y)	
Ink Cartridges	Type	UV Ink
	Capacity	CISS (1.5L ink tank)
	Color	CMYK / CMYK + W / CMYK + Varnish / CMYK + W + Varnish
Ink Curing Unit	Dual UV LED Lamps	
Printing Resolution	Maximum 1200 dpi	
Speed	8pass : 8m ² /h 12pass : 6m ² /h	
Interface	USB 3.0	
Power Supply	AC 220V ± 10%, 50/60 HZ	
RIP	Onyx / Photoprint (Caldera Optional)	
Power Consumption	Printing mode : 3000W	
Dimensions(with stand)	126(W)x41(D)x59(H) in.	
	(2258(W)x1360(D)x1500(H) mm)	
Weight(with stand)	1212 lb. (400 kg)	
Package Dimensions	132(W)x47(D)x59.8(H) in.	
	(2380(W)x1500(D)x1520(H) mm)	
Package Weight	1322 lb. (450 kg)	
Environment	Power on	Temperature: 59 ℉ to 90 ℉ [15℃ to 32℃] (68 ℉ [20℃] / Humidity: 35 to 80% (no condensation)
	Power off	Temperature: 41 ℉ to 104 ℉ [5℃ to 40℃] / Humidity: 20 to 80% (no condensation)
Accessories	USB cable, manual, drain bottle, ink cartridges, RIP software, etc.	



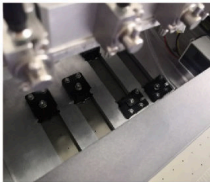
AUTOMATIC HEIGHT MEASUREMENT SYSTEM

Adjust the distance between the baseplate and the media automatically to guarantee the best quality.



PRINT HEAD PROTECTOR

When carriage crashes, the sensor in head temperature controller switches on to stop carriage at once, preventing print head from crash.



WITH TWO STAGGERED LINES PRINT HEADS LAYOUT

Able to select different color configuration, which meets various demand for different users.



MUTE LINEAR GUIDE RAIL

Dual noiseless guide rails offer comfort working environment, more stable carriage movement and more accurate printing resolution.



INK ALARM SYSTEM

Bulky ink bottle with lack of ink alarm system represents the advanced concept of industrial application.



NEGATIVE PRESSURE SYSTEM

Smart negative pressure system improves printing stability and prolongs life span of print heads.