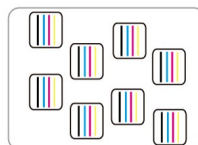


OR18-TX8/OR22-TX8

Industrial Dye Sublimation Printer (With 8 Heads)



Eight I3200 Heads
CMYK



ORIC Sublimation Ink



* 1.8m Eight I3200 Print Heads Speed

360x1200dpi - 1pass	320 m ² /h
360x2400dpi - 2pass	180 m ² /h
360x3600dpi - 3pass	100 m ² /h

* 2.2m Eight I3200 Print Heads Speed

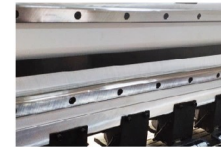
360x1200dpi - 1pass	346 m ² /h
360x2400dpi - 2pass	196 m ² /h
360x3600dpi - 3pass	120 m ² /h

Both the sublimation and direct-to-textile printers are examples of our expertise and engineering: top performant, reliable and precise. With ORIC series printer, you can maximize production while controlling quality and minimizing costs for beautiful soft signage, apparel and interior decor items that will set your business apart from the competition. Wide applications in clothing, home decoration fabrics, sampling, shirt, canvas bags, bolster, scooter, flags, textile gadgets etc.



● Technical Specifications(2m optional)

Model	OR18-TX8	OR22-TX8
Print Head	Eight I3200 Print Heads	
Printing Technology	Piezoelectric Inkjet	
Acceptable Media	Width	72 in.(1830 mm)
	Thickness	Maximum 39 mil(1 mm)
	Maximum Media Load	3000m
Printing Width	70.8 in.(1800 mm)	87.8 in.(2230 mm)
Ink Cartridges	Type	Dye Sublimation Ink
	Capacity	4*4 CISS (220ml ink cartridge with 5L ink tank)
	Color	4 colors (Cyan, Magenta, Yellow, Black)
Printing Resolution	Maximum 3600 dpi	
Printing Speed	1pass(360x1200dpi): 320 sqm/h	1pass(360x1200dpi): 346 sqm/h
	2pass(360x2400dpi): 180 sqm/h	2pass(360x2400dpi): 196 sqm/h
	3pass(360x3600dpi): 100 sqm/h	3pass(360x3600dpi): 120 sqm/h
Media Heating System	Intergrated post heater & Infrared Dryer & Fan system	
Interface	USB 3.0	
Power Supply	AC 220V ± 10%, 50/60 HZ	
Dimensions(with stand)	133.86(W)x51.18(D)x78.74(H) in.	149.60(W)x51.18(D)x78.74(H) in.
	(3400(W)x1300(D)x2000(H) mm)	(3800(W)x1300(D)x2000(H) mm)
Weight(with stand)	1433 lb. (650 kg)	1653 lb. (750 kg)
Package Dimensions	133.86(W)x55.12(D)x82.68(H) in.	157.48(W)x55.12(D)x82.68(H) in.
	(3600(W)x1400(D)x2100(H) mm)	(4000(W)x1400(D)x2100(H) mm)
Package Weight	1653 lb. (750 kg)	1874 lb. (850 kg)
Environment	Power on	Temperature: 59 ℉ to 90 ℉ [15℃ to 32℃] / Humidity: 35 to 80% (no condensation)
	Power off	Temperature: 41 ℉ to 104 ℉ [5℃ to 40℃] / Humidity: 20 to 80% (no condensation)
Accessories	USB cable, media clamp, manual, drain bottle, ink cartridges, RIP software, etc.	



Double high-precision mute rail.



Stable 5L bulk system ensures amazing printing speed.



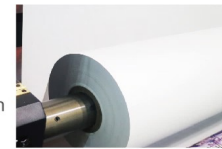
Machine cover increases cylinder control, More labor-saving and convenient .



Carriage bottom plate increases double-sided heating.



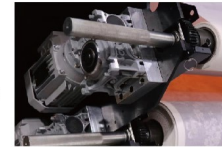
Honeycomb suction platform ensure the flatness of the paper more effectively when printing .



Junbo media roll maximum 1000m media load.



Inflatable take up and feed media shaft.



Frequency motor ensures more stable material loading and take-up