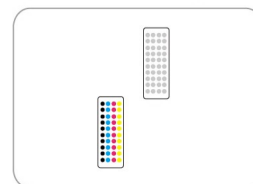


LATEX-3000 EPSON I3200(4720)

Environmental-friendly 1.8m Latex Printer



2 print heads arrangement



* 1.8m Dual I3200(4720) Print Heads Speed

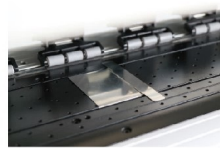
360x1800dpi - 3pass	27 m ² /h
720x1200dpi - 4pass	20 m ² /h
720x1800dpi - 6pass	13 m ² /h

Water-based Latex Ink

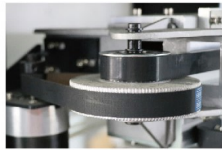




THK high-precision mute rail.



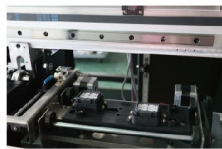
New pinch roller structure of three in group brings more stable feeding precision.



High-precision and high-stability tensioning pulley system.



High quality DC servo motor with good stability and long life.



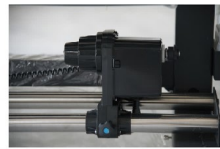
Automatic moisturizing cleaning assembly ensures the stability of head cleaning and improves working stability.



Infrared heater and cooling fan.



Bulky ink bottle with lack of ink alarm system represents the advanced concept of industrial application



External power supply, intelligent rolling system.

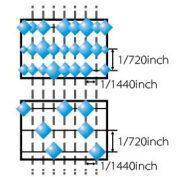
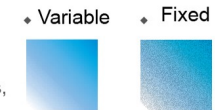
● Technical Specifications

Model	Latex 3000
Print Head	Dual I3200(4720) Print Heads
Printing Technology	Piezoelectric Inkjet
Acceptable Media	71.6 in.(1820 mm)
	Maximum 39 mil(1 mm)
Printing Width	132.2 lb.(60 kg)
	70.8 in.(1800 mm)
Ink Cartridges	Latex Ink
	4*4 CISS (220ml ink cartridge with 1.5L ink tank) 4 colors (Cyan, Magenta, Yellow, Black) + optimizer
Printing Resolution	Maximum 2400 dpi
Printing Speed	3pass(3600x1800dpi): 27 sqm/h
	4pass(720x1200dpi): 20 sqm/h
	6pass(720x1800dpi): 13 sqm/h
Rip	PrintFactory
Interface	USB 3.0
Power Supply	AC 220V ± 10%, 50/60 HZ
Dimensions(with stand)	133(W)x37(D)x60(H) in.
	(3380(W)x950(D)x1560(H) mm
Weight(with stand)	838 lb. (380 kg)
Environment	Temperature: 59 ℉ to 90 ℉ [15 ℃ to 32 ℃] (68 ℉ [20 ℃] / Humidity: 35 to 80% (no condensation)
	Temperature: 41 ℉ to 104 ℉ [5 ℃ to 40 ℃] / Humidity: 20 to 80% (no condensation)
Accessories	USB cable, media clamp, manual, drain bottle, ink cartridges, RIP software, etc.

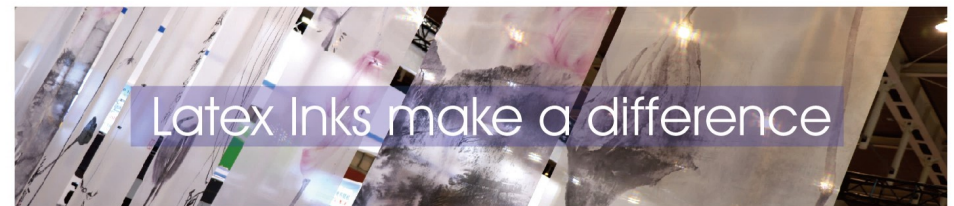


With dual I3200(4720) heads , the first use minimal 3.5pl variable ink droplet latex printer.

Added optimizer output ,can be printed on uncoated materials, making the output more delicate, the colors more firm, and the picture saved longer.Can be directly printed on wallpaper, wallcovering, uncoated PVC & PET materials



Minimal 3.5pl Variable Ink Droplet



Achieving amazing colors

Quick dry and no need laminating, highly improves the color performance. Sharpen the quality of any substrate with the vibrant color gamut of Latex Inks and a thin ink layer preserving media feel.

Outdoor thick scratch resistance

The latex composition in the ink is heated and dried to lock the pigment on the surface of the material, avoiding the oxidation of the pigment, thus preserving the color for a longer time and effectively preventing scratching.

Designed with the environment in mind

In addition to delivering outstanding image quality, consistency, and durability, water-based Latex Inks provide an attractive environmental protection for both printing service providers and customers.