

RICOH
imagine. change.

Direct to Garment Printer

RICOH
Ri 3000/Ri 6000



Ri 3000

600
dpi
full colour
plus white.

Ri 6000

600
dpi
full colour
plus white.

Keep work going and grow your business efficiently

Discover a more efficient route from design to print

Ready for a faster and easier print to garment process? The RICOH Ri 3000 and Ri 6000 save you time, allowing you to produce more, and focus on mass customisation. The Ricoh DTG printers streamline print workflows into three easy steps:

- Upload the designs;
- Preview your work on the console and then print on a variety of garments (pretreated, if applicable).
- Then, cure the ink with a heat press for colour-fast, machine-washable prints that last and stretch without cracking.

Setup is faster and easier than the multistep process required for analogue technology, such as screen print. Screen printers, specialist DTG printers, sign & display printers, commercial graphic arts printers, other entrepreneurs can all benefit....from producing more inhouse. With a quick turnaround of short and long runs, you can consistently deliver high quality prints on time and keep customers coming back.



Increase profit with a wide selection of applications

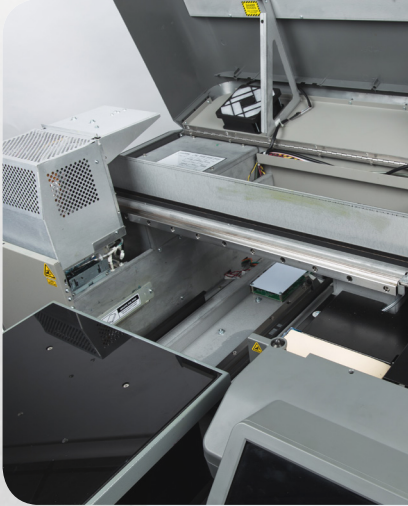
Expand your business by offering a wide variety of printed garments, including T-shirts, sweatshirts, socks and tote bags. The RICOH Ri 3000 and Ri 6000 can print on cotton-polyester blends and are ideal for printing on 100% cotton. And with up to 5.84 cm of laser-assisted table height adjustment, you can print on hoodies with zips and add other thick fabric prints to your product portfolio. Optional print tables let you add even more. Print service providers can now bring more work inhouse and increase revenue with one-offs and large order efficiently.

Impress customers with high quality prints

Win and retain more customers by delivering the high quality output that comes with the combination of Ricoh innovations and engineering. The Ricoh MH2420 industrial printheads deliver optimum jetting performance and produce up to 600 dpi resolution prints that will amaze customers for years to come. Impress customers by making designs on light and dark garments come to life with CMYK plus two white ink channels. Plus, the eco-friendly, water-based inks will give your designs a soft touch and vibrant colours. You can also control output with the included AnaRIP and opt for higher resolution or quicker results by selecting print quality settings that affect colour, density and more.



Work smarter & get personal



Increase uptime and productivity

Both systems incorporate Ricoh piezo-electric printhead technology. These industrial grade printheads have a robust stainless steel architecture which delivers high levels of durability and longevity, contributing to market leading performance. The ultra fast RICOH Ri 6000 is saving you time so you can bring in more work. The systems also include user friendly maintenance features such as an automatic ink circulation system for white channels which improves ink flow and increases performance. The automated printhead cleaning and ink maintenance features reduce operator maintenance and further reduce costs.

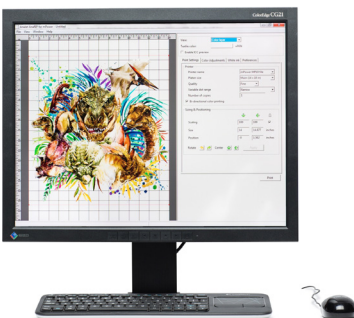
Make your printing process more efficient

Easily manage print workflows with a touch-enabled operation panel that offers an intuitive, user friendly feel. This seven inch, colour interface is an advanced feature and gives you more convenient control over print queues. There are a number of functions available, including settings for print size and positioning. You can also reprint previous jobs simply and preview your designs to avoid the cost of printing test garments. Plus, run diagnostics and maintenance; and set times for automatic printhead cleaning to keep your printer in top condition and help ensure that work keeps flowing without interruption. The printer supports USB as well as network connectivity for added convenience.



Add personalisation and boost productivity

Simplify the print processes even more with the AnaRIP software, included with RICOH Ri 3000 and Ri 6000 printers. AnaRIP processes images in seconds and saves you time by automatically performing colour separation for you. AnaRIP allows the user to control ink volume used during production, using multiple quality controls. Plus, AnaRIP TrueView can reduce production costs by minimising the risk of production failures. TrueView automatically adjusts colours on your monitor based on shirt colour so what you see is what you get.



RICOH Ri 3000/Ri 6000

SYSTEM SPECIFICATIONS

GENERAL

Head Type:	RICOH MH2420 industrial grade piezo-electric drop on demand inkjet printhead	
Ink Channels:	Ri 3000 6 channels	Ri 6000 12 channels
Print Speed: (Speed mode)	Ri 3000 51 seconds	Ri 6000 27 seconds
(Fine mode)	100 seconds	53 seconds
Resolution:	600 x 600 dpi	
Maintenance Features:	Automated printhead cleaning system; separate head cleaning options for CMYK and white channels	
Operating Environment:	Temperature: 15-32 °C; relative humidity: 45-80% RH	
Power Source:	220-240V, 50/60Hz, 1.2A max	
Power Consumption:	Less than 95W	
Dimensions (W x D x H):	111.8 x 107.4 x 50.3 cm	
Weight:	Less than 81.6 kg	

INK SET

Ink Colours:	Cyan, magenta, yellow, black (CMYK) and white
Ink Type:	Water-based pigment inks. CMYK: Garment ink and PowerBright Plus. White: PowerBright
Ink Delivery System:	Advanced closed loop delivery system; automatic ink circulation system for white channels

SUBSTRATES

Maximum Printable Area:	35.6 x 45.7 cm
Printable Substrate:	100% cotton, cotton-polyester blends
Table Height Adjustment:	Automatic sensor adjusts table height for media up to 5.84 cm thick (Class 2 Laser Product); or manual table height adjustment up to 6.85 cm thick (measurements based on standard print table)
Optional Print Tables:	Hat print table: 15.2 cm x 3.8 cm Children size print table: 21.6 cm x 30.5 cm Sleeve print table: 10.2 cm x 43.2 cm

ANARIP SYSTEM REQUIREMENTS

Operating System:	Windows 7/8/10, 32 or 64 bit
Network Interface:	Ethernet, USB 2.0
CPU:	2.0 GHz
Memory:	2.0 GB RAM
HDD:	2.0 GB
Compatible File Format:	TIFF, PNG, JPG, PDF, PSD, AI, BMP
Minimum Monitor Resolution:	1024 x 768 pixels or higher
Maximum Image Size:	35.6 x 45.7 cm at 300 dpi

RICOH
imagine. change.

www.ricoh-europe.com

The facts and figures shown in this brochure relate to specific business cases. Individual circumstances may produce different results. All company, brand, product and service names are the property of and are registered trademarks of their respective owners. Copyright © 2017 Ricoh Europe PLC. All rights reserved. This brochure, its contents and/or layout may not be modified and/or adapted, copied in part or in whole and/or incorporated into other works without the prior written permission of Ricoh Europe PLC.

These printers comply with Low Voltage Directive (LVD) 2014/35/EU.